



## SonicWALL TZ Series

NETWORK SECURITY

**Flexible, multi-layered security with Unified Threat Management**

- **High-performance deep packet inspection firewall**
- **Real-time gateway anti-virus, anti-spyware and intrusion prevention**
- **Support for 3G and analog modem PC cards**
- **Automated WAN failover and failback**
- **Secure 802.11b/g wireless LAN**
- **Port level security**
- **Intuitive configuration wizards**
- **Global management and reporting**

The SonicWALL® TZ Series is the ultimate security platform for small and distributed networks, providing a choice between absolute ease-of-use for basic networks and unsurpassed flexibility for networks with more complex needs.

The TZ Series integrates a deep packet inspection firewall, 802.11b/g secure wireless, gateway anti-virus, anti-spyware, intrusion prevention, content filtering, failover/failback technologies and IPSec VPN capabilities into a cost-effective solution, and scales to protect your investment as your organization grows. Available in multiple hardware and node configurations including the **SonicWALL TZ 150, TZ 180 TotalSecure and TZ 190**, the TZ Series is ideal for small businesses, remote and branch offices and retail/point-of-sale deployments.

Every TZ Series appliance is available as a SonicWALL® TotalSecure™ solution, a convenient and affordable solution that combines the hardware and all the services needed for comprehensive network protection from a wide range of network threats including viruses, spyware, worms, Trojans, keyloggers and other malicious threats. Together, these components form a Unified Threat Management (UTM) solution that delivers exceptional security to protect against emerging threats.

### Features and Benefits

A configurable **high-performance deep packet inspection** firewall provides enterprise-class protection for key Internet services such as Web, e-mail, file transfer, Windows services and DNS.

**Gateway anti-virus, anti-spyware and intrusion prevention** provides real-time security against the latest viruses, spyware, software vulnerabilities and other malicious code.

The TZ 190 features a modular design that **supports 3G and analog modem PC cards** for use as either a primary or secondary WAN connection.

Integrated and **automated WAN failover and failback** ensures continuous uptime by failing over to an alternate WAN connection should the primary fail.

**Secure 802.11b/g wireless LAN** technologies provide WPA2 or IPSec secured high-speed wireless connectivity.

SonicWALL PortShield Architecture provides the flexibility to configure **port level security** for the LAN, providing protection between devices inside the LAN.

**Intuitive configuration wizards** simplify even the most complicated tasks, including VPN set-up, NAT configuration and public server configuration.

Award-winning **Global Management System (GMS)** provides comprehensive global management and reporting tools for simplified configuration, enforcement and management from a central location.

Consult the Key Features table for a list of features supported on each product.

#### **TZ 150/TZ 150 Wireless**

An entry level security platform delivering business-class protection to small offices in an easy-to-use, affordable solution.

#### **TZ 180/TZ 180 Wireless TotalSecure**

A high-performance network security platform that provides threat protection for home, small, remote and branch offices.

#### **TZ 190/TZ 190 Wireless**

A complete network security platform for small businesses, branch offices or portable networks that adds modular PC and WAN support.



Key Features



Features	TZ 150 Series	TZ 180 Series	TZ 190 Series
Interfaces	5 Ethernet	7 Ethernet	10 Ethernet
SonicOS Version	Standard	Standard	Enhanced
Upgradeable to SonicOS Enhanced	No	Yes	N/A
Site-to-Site VPN Tunnels Max	2	10 Node = 2 25 Node = 10	15
Bundled Global VPN Clients for Remote Access	0	10 Node = 0 25 Node = 1	2
Maximum Global VPN Clients	2	10 Node = 5 25 Node = 25	25
Deep Packet Inspection Firewall	S	S	S
Stateful Packet Inspection Firewall	S	S	S
Easy-to-Follow Configuration Wizards	S	S	S
Streamlined GUI	S	S	S
Wireless Firewalling	S	S	S
Wireless Intrusion Detection Services	S	S	S
Wireless Guest Services	S	S	S
Lightweight HotSpot Messaging	S	S	S
Inter-zone Scanning	S	S	S
Voice over IP (VoIP) Security	S	S	S
Manageable via SonicWALL's Award-winning Global Management System (GMS)	S	S	S
Optional 802.11b/g Wireless LAN	S	S	S
Advanced Wireless Security			
IPSec over WLAN	S	S	S
WPA	S	S	S
WPA2	-	S	S
Payment Card Industry (PCI) Compliance	S	S	S
PortShield Security	-	O	S
Integrated and Automated Failover and Failback	-	O	S
Object-based Management	-	O	S
Policy-based NAT	-	O	S
Load Balancing	-	O	S
SonicPoint Management	-	O	S
Configurable Optional Port	-	TZ 180 = S TZ 180 W = O	S
3G Wireless WAN PC Card Support*	-	-	S
Analog Modem PC Card Support**	-	-	S

S = Standard Feature    O = Optional Upgrade    - = Feature Not Available

\*Card not included. See <http://www.sonicwall.com/us/tz190cards.html> for supported 3G PCMCIA Type II cards.

\*\*Card not included. Support for third-party cards will be available in the second half of 2007.

SonicOS



SonicOS Standard allows rapid deployment in basic networks with a user-friendly Web interface and powerful configuration wizards. Building upon SonicOS Standard, SonicOS Enhanced is a sophisticated software upgrade that integrates a host of advanced features to meet the business continuity, configuration flexibility and management requirements of complex networks today and into the future.

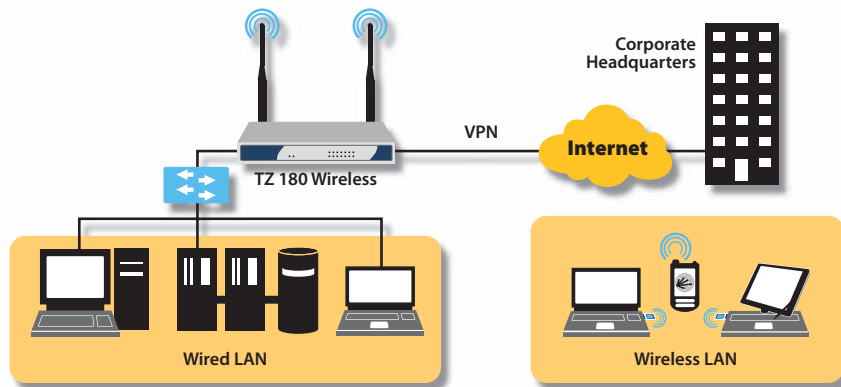
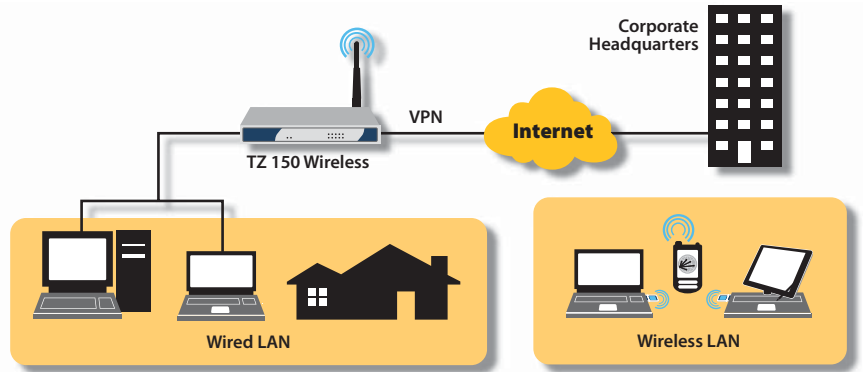
**SonicWALL's  
TZ Series is the  
ultimate security  
platform for  
small and  
distributed  
networks,  
including remote  
and branch  
offices and  
retail/POS  
deployments**

## Applications

### SonicWALL TZ 150 Series

Ideal for home and small offices, the TZ 150 Series integrates a deep packet inspection firewall, IPSec 3DES/AES VPN and 802.11b/g secure wireless capabilities in an easy-to-use, low cost platform.

- Compact form factor includes a single Ethernet WAN port and four-port auto-MDIX LAN switch
- Supports gateway anti-virus, anti-spyware, intrusion prevention and content filtering for true layered security
- Designed to exceed the performance requirements of typical business DSL and cable broadband services



### SonicWALL TZ 180 TotalSecure Series

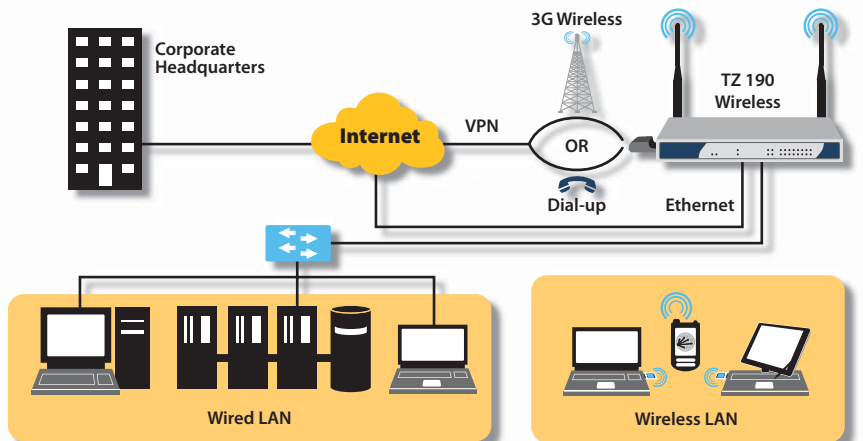
Designed as a complete Unified Threat Management (UTM) platform delivering business-class protection to small, remote and branch office networks, the TZ 180 Series features an integrated 5-port auto-sensing MDIX switch and configurable optional port.

- Exceptionally fast Unified Threat Management (UTM) performance on networks running gateway anti-virus, anti-spyware and intrusion prevention
- Integrated 802.11b/g wireless LAN with WPA2 support delivers increased security and flexibility as well as greater range for wireless users
- Inter-zone scanning combines with Unified Threat Management protection to eliminate threats no matter where they originate—inside or outside the network
- The TZ 180 delivers twice the UTM scanning speed as the TZ 170 and provides compelling new features such as a security dashboard for real-time threat monitoring and WPA2 support

### SonicWALL TZ 190 Series

The flagship of the SonicWALL TZ Series, the TZ 190 is a high-performance security platform that integrates a Type II PC Card slot for WAN backup for small networks with mission-critical needs. The TZ 190 also includes automated failover/failback, a deep packet inspection firewall and optional 802.11b/g wireless LAN access. Building on the capabilities of the TZ 180 TotalSecure Series, the TZ 190 Series provides additional functionality including:

- Rapidly establish secure 3G wireless broadband network access in an instant without the need for a fixed Internet connection
- Adherence to PCI standards make this the ultimate solution for retail point-of-sale merchants and service providers who require secure transmission of customer information
- Modular design enables the use of a wide range of PC cards (3G, analog modem) for greater usage flexibility



# Specifications

## SonicWALL TZ Series

Features	TZ 150 Series	TZ 180 Series	TZ 190 Series
<b>Nodes Supported</b>	10	10/25	Unrestricted
<b>Stateful Throughput*</b>	30+ Mbps	90+ Mbps	90+ Mbps
<b>Deep Packet Inspection Throughput</b>	5 Mbps	10 Mbps	10 Mbps
<b>Connections</b>	2,000	6,000	6,000
<b>Policies</b>	20	100/250**	250
<b>Denial of Service Attack Protection</b>	22 classes of DoS, DDoS and scanning attacks		
VPN	TZ 150 Series	TZ 180 Series	TZ 190 Series
<b>3DES/AES Throughput*</b>	10+ Mbps	30+ Mbps	30+ Mbps
<b>Encryption</b>	DES, 3DES, AES (128, 142, 256-bit)		
<b>Authentication</b>	MD5, SHA-1		
<b>Key Exchange</b>	IKE, Manual Key, Certificates (X.509)		
<b>XAUTH/RADIUS</b>	Yes		
<b>L2TP/IPSec</b>	Yes		
<b>Certificate Support</b>	Yes		
<b>Dead Peer Detection</b>	Yes		
<b>DHCP Over VPN</b>	Yes		
<b>IPSec NAT Traversal</b>	Yes		
<b>Redundant VPN Gateway</b>	Yes		
<b>Global VPN Client Platforms Supported</b>	Microsoft® Windows 2000, Windows XP, Vista 32-bit (available in the second half of 2007)		
Networking	TZ 150 Series	TZ 180 Series	TZ 190 Series
<b>DHCP</b>	Internal server, relay		
<b>NAT Modes</b>		1:1, 1:many, many:many, transparent mode	1:1, 1:many, many:1**, many:many, flexible NAT (overlapping IPs)**, PAT**, transparent mode
<b>Policy-based Routing</b>	–	Routing decisions based on combination of source IP, destination IP, service**	
<b>Authentication</b>	RADIUS, internal user database	RADIUS, Active Directory**, LDAP**, internal user database	
<b>DDNS</b>	Support for services offered by the following dynamic DNS providers: dyndns.org, yi.org, no-ip.com and changeip.com		
<b>User Database</b>	10	100/150**	150
<b>VoIP</b>	Full H.323v1-5, SIP, gatekeeper support, outbound bandwidth management, call tracking and monitoring		
System	TZ 150 Series	TZ 180 Series	TZ 190 Series
<b>Zone Security</b>	–	Yes**	Yes
<b>Object-based Management</b>	–	Yes**	Yes
<b>PortShield Security**</b>	–	5 security zones	8 security zones
<b>Management and Monitoring</b>	Local CLI, Web GUI (HTTP, HTTPS), SNMP v2; Global management with SonicWALL GMS		
<b>Logging and Reporting</b>	ViewPoint, Local Log and Syslog		
<b>Load Balancing</b>	–	Yes, with percent-based, round robin and spill-over**	
Built-in Wireless LAN	TZ 150 Series	TZ 180 Series	TZ 190 Series
<b>Standards</b>	802.11b/g, WEP, WPA, TKIP, PSK, 802.1x, EAP-PEAP, EAP-TTLS	802.11b/g, WEP, WPA, WPA2, 802.11i, TKIP, PSK, 802.1x, EAP-PEAP, EAP-TTLS	
<b>Antennas</b>	Single, nondetachable external 2 dBi diversity	Dual, detachable, external 5 dBi diversity	
<b>Radio Power</b> 802.11b 802.11g	16.5 dBm maximum	13 dBm maximum 20 dBm maximum @ 6–48 Mbps, 19dBm @ 54 Mbps	
<b>Radio Receive Sensitivity</b> 802.11b 802.11g*	-82 dBm @ 11 Mbps, -88 dBm @ 6 Mbps, -68 dBm @ 54 Mbps	-89 dBm @ 11 Mbps -91 dBm @ 6 Mbps, -73 dBm @ 54 Mbps	
Hardware	TZ 150 Series	TZ 180 Series	TZ 190 Series
<b>Memory</b>	64 MB	128 MB	128 MB
<b>Flash Memory</b>	8 MB	16 MB	16 MB
<b>Modem Dial-up</b>	–	–	With Modem PC Card***
<b>Power Input</b>	100 to 240 VAC, 50–60 Hz, 1 A		
<b>Max Power Consumption</b>	8.4 W/9.9 W (TZ 150 W)	5.5 W/7.9 W (TZ 180 W)	12.7 W/15.1W (TZ 190 W)
<b>Total Heat Dissipation</b>	28.6 BTU/26.6 BTU (TZ 150 W)	26.0 BTU/34.0 BTU (TZ 180 W)	43.8 BTU/51.6 BTU (TZ 190 W)
<b>Certifications (Pending)</b>	ICSA Firewall 4.1, ICSA IPsec VPN 1.0d	ICSA Firewall 4.1, ICSA IPsec VPN 1.0d, FIPS 140-2, VPNC AES, Common Criteria EAL-2	
<b>Dimensions</b>	7.5 x 6.0 x 1.1 in (18.9 x 15.2 x 2.7 cm)	8.3 x 4.9 x 1.1 in (21.1 x 12.4 x 2.8 cm)	10.0 x 7.0 x 1.2 in (25.4 x 17.8 x 3.0 cm)
<b>Weight</b>	1.25 lbs/0.57 kg 1.30 lbs/0.59 kg (TZ 150 W)	1.40 lbs/0.64 kg 2.40 lbs/1.09 kg (TZ 180 W)	2.00 lbs/0.92 kg 2.20 lbs/1.00 kg (TZ 190 W)
<b>Major Regulatory Compliance</b>	FCC Class B, ICES Class B, CE, C-Tick, VCCI Class B, MIC, NOM, UL, cUL, TUV/GS, CB, WEEE, RoHS (TZ 180/190)		
<b>Environment</b>	40–105° F, 5–40° C		
<b>MTBF</b>	9.0 Years	8.5 Years	9.6 Years

\*Testing Methodologies: Maximum performance based on RFC 2544 (for firewall). Actual performance may vary depending on network conditions and activated services. VPN throughput measured using UDP traffic at 1280 byte packet size adhering to RFC 2544. \*\* With SonicOS Enhanced. \*\*\* Modem card not included. Support for third-party cards will be available in the second half of 2007.

### SonicWALL, Inc.

1143 Borregas Avenue  
Sunnyvale CA 94089-1306

T +1 408.745.9600  
F +1 408.745.9300

www.sonicwall.com



SonicWALL TZ 150  
01-SSC-5810 (US/Canada)  
SonicWALL TZ 150 Wireless  
01-SSC-5815 (US/Canada)  
SonicWALL TotalSecure 5 (TZ 150)  
01-SSC-6080 (US/Canada)  
SonicWALL TotalSecure 5 Wireless  
(TZ 150 W) 01-SSC-6081 (US/Canada)



SonicWALL TZ 180 TotalSecure 10  
01-SSC-6097  
SonicWALL TZ 180 Wireless  
TotalSecure 10  
01-SSC-6098 (US/Canada)

SonicWALL TZ 180 TotalSecure 25  
01-SSC-6085  
SonicWALL TZ 180 Wireless  
TotalSecure 25  
01-SSC-6086 (US/Canada)



SonicWALL TZ 190  
01-SSC-6850  
SonicWALL TZ 190 Wireless  
01-SSC-6851 (US/Canada)

SonicWALL TotalSecure 3G  
(TZ 190)  
01-SSC-6087  
SonicWALL TotalSecure 3G Wireless  
(TZ 190 W)  
01-SSC-6088 (US/Canada)