
SteelCentral NetSensor

Agentless Application and Infrastructure Monitoring

The Business Challenge

The health of the infrastructure components supporting your business-critical applications is just as important as those applications, because if the infrastructure fails, your applications fail, too. You need to be one step ahead with real-time, actionable information to identify and diagnose problems before your business is impacted. Are you trying to identify infrastructure component problems without having to deploy costly agents everywhere? Do you need a better way to know if your sites, applications, and devices go down during off hours?

The Riverbed Solution

Riverbed® SteelCentral™ NetSensor provides agentless infrastructure component monitoring to deliver a comprehensive picture of how your infrastructure is affecting network and application performance.


It offers a broad overview of how the devices on your network are performing to complement your network and application performance management visibility.

SteelCentral NetSensor uses remote instrumentation interfaces such as Simple Network Management Protocol (SNMP) and Windows Management Instrumentation (WMI) to capture availability and performance information from infrastructure components, including servers, application components, network devices, SteelHead and other vendor-specific management systems. It monitors network device and interface availability and performance indicators, such as bandwidth utilization, packet loss, latency, errors, discards, CPU, and memory for SNMP and WMI-enabled devices.

It also supports synthetic transaction monitoring, allowing you to collect performance data from scheduled tests that simulate the way users interact with your critical sites, applications and devices. Synthetic testing using distributed test engines allows you to proactively monitor availability and performance of your applications remotely from various locations in your network.

SteelCentral NetSensor displays its data, on both a historical and real-time basis, to the SteelCentral Portal .

Key Benefits

- Accelerate application troubleshooting by understanding the role of infrastructure in performance issues
 - Monitor service, application and server response time, availability and end-to-end performance 24/7, even during off hours
 - Track availability and uptime of routers, switches, and other SNMP- and WMI-enabled devices
 - Understand the impact and measure service level agreements (SLA) for third-party services
 - Test B2B Web services that use SOAP, REST or other Web service technologies to ensure that applications that use them are running as expected
 - Complement high-level application and network performance management workflows with element performance and availability data
- 

Key Features

Synthetic testing

- Supported synthetic tests include: Web transactions (using Selenium), HTTP, databases, DNS, LDAP, TCP port, Ping, and external scripts. Sample Selenium tests shipped with NetSensor help get started with testing SharePoint, Office 365, and SaaS applications
- Test results include status, availability, response time, and test failure reason
- Utilizes light-weight distributed test engines to provide perspective throughout the enterprise

SNMP monitoring

- Poll routers, switches, Linux/Unix server and printers using SNMP (Simple Management Network Protocol) for availability and performance information
- Metrics collected include device availability and status, CPU utilization, interface availability, status, errors and discards, IP SLA latency and jitter among others

WMI monitoring

- Remotely monitor Windows systems for early warning signs of potential failure of Windows operating system issues, application issues and other potential problems
- Data polled from hosts and servers include CPU, memory, OS health, and process resource consumption among others
- Monitor the health of windows services and applications such as SQL server, IIS Web service, Active Directory, Domain Controller and others
- Support polling for Microsoft SharePoint servers

Alerting

- Set custom alerts for key devices in your application infrastructure
- View alerts by email, Syslog, SNMP trap, and RSS feed

Integration with Riverbed products

- Displays test results in the SteelCentral Portal to provide single-pane-of-glass viewing with other Riverbed SteelCentral application and network performance management solutions
- Ability to poll SteelHead EX and SteelHead Interceptor for device and interface metrics
- Supports running synthetic test engines on Riverbed® SteelHead™ EX appliances

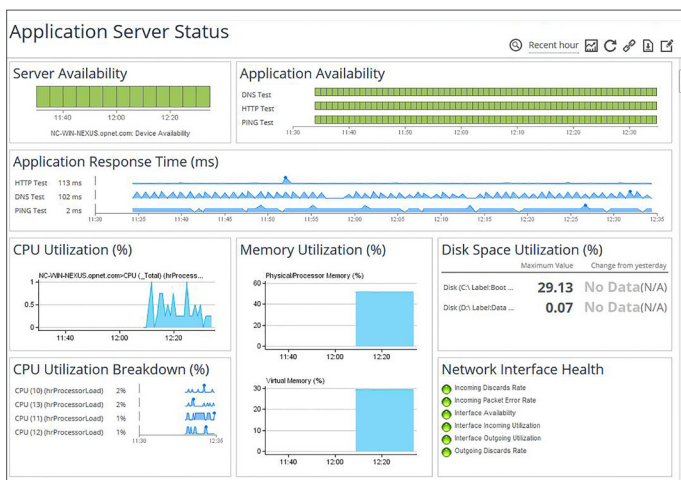


Figure 1

SteelCentral NetSensor monitors server, network device and interface availability and performance indicators, such as bandwidth utilization, packet loss, latency, errors, discards, CPU, and memory for SNMP and WMI-enabled devices.

Supported Synthetic Tests

- Web transactions
- HTTP
- Databases
- DNS
- TCP port
- Ping
- External scripts
- LDAP

About Riverbed

Riverbed Technology, the leader in application performance infrastructure, provides the most complete platform for the hybrid enterprise to ensure applications perform as expected, data is always available when needed, and performance issues can be proactively detected and resolved before impacting business performance. Learn more at riverbed.com.

