



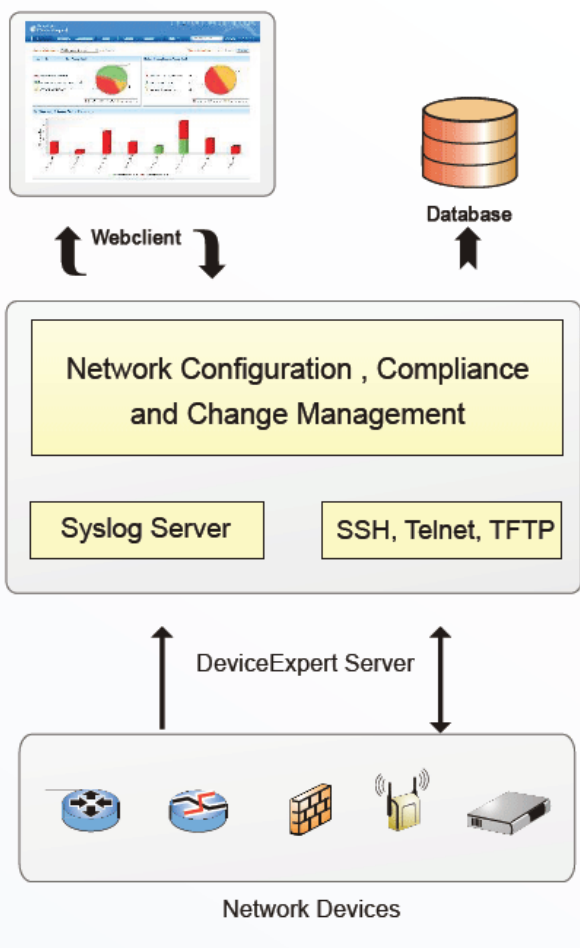
**Manage Device Configurations, Ensure Network Uptime**

*Are you a network administrator managing a large number of network devices? Do unplanned, frequent configuration changes eat away your time and peace of mind? Do you experience network outages due to faulty configuration changes? Are you concerned about ensuring network uptime? Do Government and Industry Regulations baffle you?*

**ManageEngine Network Configuration Manager is here to help you!**

Network Configuration Manager is a trusted solution for network administrators to take total control of the entire life cycle of device configuration management. It is a web-based, multi vendor network configuration, change and compliance management (NCCCM) solution for switches, routers, firewalls and other network devices. It servers as a secure repository for device configuration, helps in continuous monitoring of changes, provides change notifications and reports, helps in easy and safe recovery to trusted configurations and in automating all configuration management tasks.

**Architecture**



**Network Configuration Manager comes in handy too ...**

**Manage Configurations**

Maintain versions of configurations and view, compare, edit, label and upload them from a centralized web GUI

**Take Control of Changes**

Monitor configuration changes in real-time, get notifications, prevent unauthorized changes, approve genuine changes

**Ensure Compliance**

Define standard practices and policies and automatically check configurations for compliance. Get reports on compliance status and satisfy your auditors.

**Automate**

Automate all repetitive, time-consuming configuration tasks

**Audit**

Get completed record of who, what and when of configuration changes

**Improve Network Visibility**

Get comprehensive reports on devices inventory, configuration changes and compliance

**Improve Efficiency**

Ensure network uptime, reduce unplanned configuration changes, improve network security increase overall efficiency

Features

Configuration Management

- Multi-vendor configuration for switches, routers, firewalls and other devices
- Discovery and manual addition of network devices
- Encrypted storage of device configuration in database
- Contextual, side-by-side comparison of altered configuration

Change Management

- Real-time configuration tracking and effective change management policies all-time configuration tracking and effective change management
- Quick resotation to trusted configurations through a few simple steps

Compliance & Automation

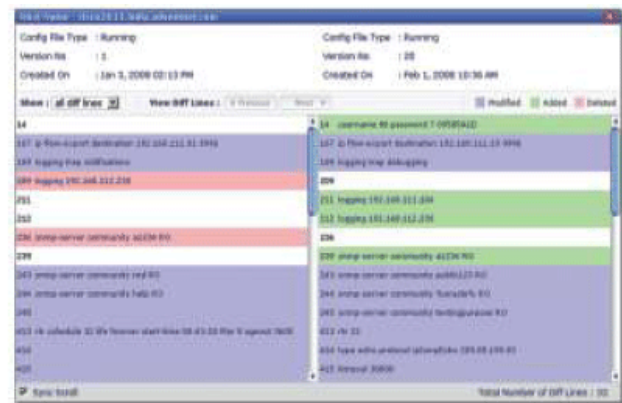
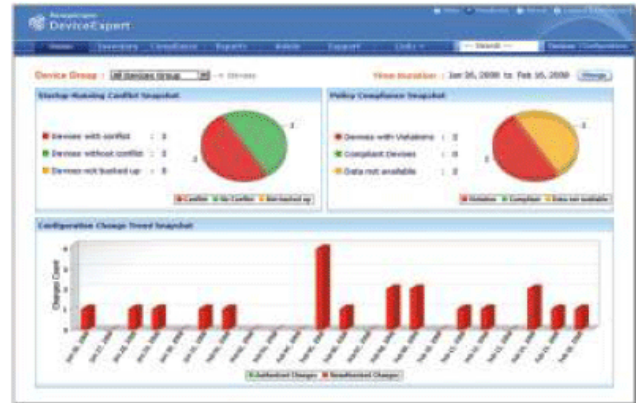
- Provision for examining configurations of rcofpliance to a defined set of interal/external policies and standards
- Templates for ocmmonly used configurations
- Automation of device configuration tasks

Security

- Role-based access control for devices & configuration
- Approval mechanism for configuration upload

Audit, Reports & Miscellaneous

- Detailed trails capturing 'who', 'what', and 'when' of configuration changes
- Detailed reports on Inventory, configuration changes, compliance
- Provision for searching devices and configuration
- User friendly, web-based user interface
- Disaster recovery tools



Customer Speak

*ManageEngine Network Configuration Manager has proven a very useful tool to help Federal Signal, Inc. manage multiple equipment across multiple geographic locations. It has allowed us do effectively manage remove device configurations and implement effective change control for network infrastructure - Larry Ware, Federal Signal Global Network Boffin*

System Requirements

- 1.8 GHz Pentium (R) processor, 512 MB RAM, 200 MB disk space for product installation and 10 GB for database on Windows 2003, XP, RH Linux 7.2/8.0/9.0, AS 2.1 & 3.0, ES 2.1 & 3.0
- IE 7 and above, Firefox 2.0 and above

