



IT Asset Management, The whole nine yards!

*"Short time to setup, easy to use,
no training required and is loaded
with functions."*

Eric Lau
Director, IT, Unisource

ManageEngine AssetExplorer is a web-based ITAM tool that helps you monitor and manage assets in your network from Planning phase to Disposal phase. AssetExplorer provides you with a number of ways to ensure discovery of all the assets in your network. You can manage software & hardware assets, ensure software license compliance and track purchase orders & contracts - the whole nine yards! AssetExplorer is easily installable and works right out of the box.

Benefits

- ✓ Minimize Asset Life-Cycle Costs
- ✓ Maximize Benefits from Assets
- ✓ Make Informed Decisions on Planning and Purchases
- ✓ Ensure Software License Compliance
- ✓ Discover and Monitor All your Assets from One Place
- ✓ Know the Total Cost of Ownership of an Asset

IT Asset Management

- Monitor complete asset life-cycle from procurement to disposal
- Automatic discovery of all hardware and software deployed in your network
- Drilldown into assets to view critical information (history, CI info, relationship etc.)

Remote Control

- Take control of any asset through remote access
- Perform maintenance tasks on remote systems

Software Asset Management & License Compliance

- Stay compliant with license agreements with easy-to-understand flash charts
- Enforce peak usage limits for concurrently licensed applications
- Identify unused and under-utilized licenses

CMDB

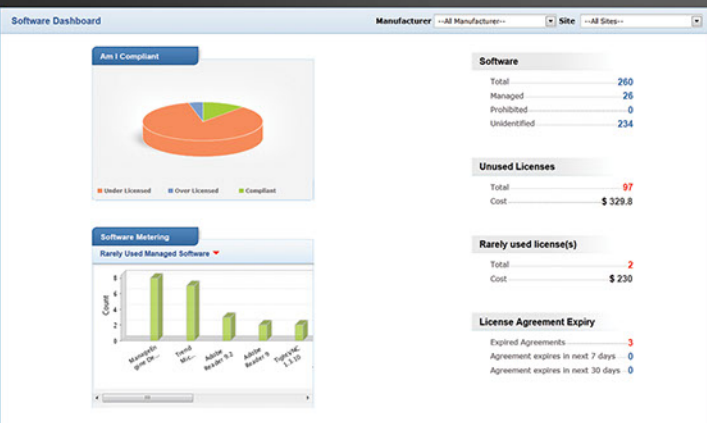
- View all the Configuration Items and their relationships
- Helps in root cause analysis and impact monitoring
- Close to 50 pre-defined Configuration Types available

Reports

- Generate detailed pre-defined/custom/query reports
- Ability to schedule reports and deliver to your inbox

Purchase Orders and Contracts

- Use purchase order workflow for ease of purchase order generation
- Define contract details, rules and attach contracts
- Notify technician prior to contract expiration



This is a screenshot of the Software Dashboard. It shows a pie-chart distribution of under-licensed, compliant and over-licensed software in the network.

The bar-chart shows Software Metering. Other software related metrics (unused and rarely used licenses) are also displayed.



Website
www.AssetExplorer.com
Contact
eval@manageengine.com



Zoho Corporation
4900 Hopyard Rd. Suite 310,
Pleasanton, CA 94588, USA.
Phone: +1-925-924-9500

Zoho Corporation Private Limited
DLF IT Park - Block 7, NO. 1/124, Mount PH Road
Chennai, 600 089, India
Phone: +91-44-22707070 | <http://www.manageengine.com>