

SNMPc OnLine 12

"The new SNMPc Online provides a clean, professional-looking and intuitive web interface that is easy to access, easy to customize and easy to understand. With SNMPc and SNMPc Online you have your total solution."

Shaun Sturby, Technical Services Manager - Optrics Engineering

SNMPc OnLine is an advanced reporting engine for the SNMPc Enterprise Network Management System. With a dynamic web based console and flexible presentation options including Microsoft Visio Graphics, pre-canned reports, and custom dashboards, SNMPc Online gives you unprecedented network and application visibility.

▶ NetFlow Application Monitoring

Comprehensive NetFlow and sFlow support delivering deep insight into application usage and top talkers on your network.

▶ Specialized Reporting

Get "out-of-the-box" results with optimized report formats for network availability and latency, router and switch performance, server CPU and disk metrics, and for selected vendor's devices.

▶ High Level Overviews

Display multiple reports in a single Top N dashboard view. Concise one screen interface delivers network overview and "to do list" for potential network issues.

▶ Custom Dashboards

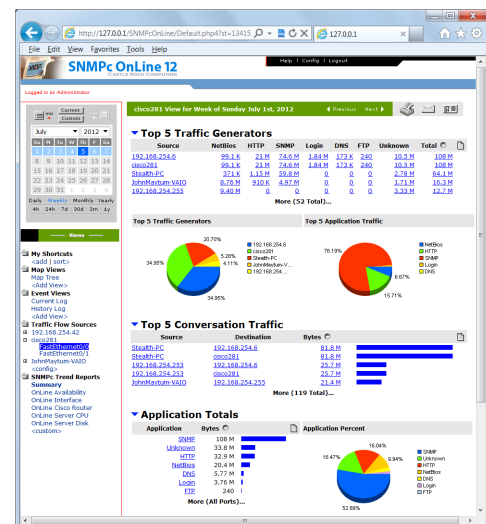
Mix and match information from multiple reports and devices on personalized web pages with versatile graphic elements including dials, 3d-graphs, tables, charts, event views and node lists.

▶ Scalable Architecture

Manage large global networks with geographic or organization based report grouping and SNMPc's distributed polling capabilities.

▶ Multi-User Security

Restrict capabilities and reports available to each user based on their needs and responsibilities. An ideal solution for Management Service Providers.



NetFlow Monitoring

▶ Multi-Vendor Support

Monitor performance metrics and SNMP alerts from any SNMP v1, v2, or v3 enabled device, regardless of vendor. A future proof solution that adapts to your requirements as your network evolves.

▶ Seamless Integration

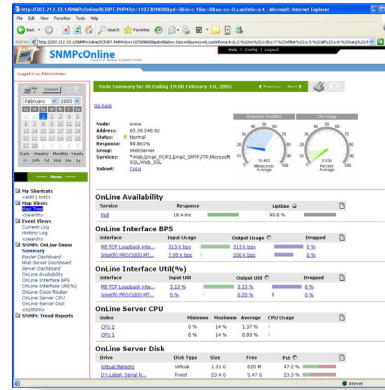
SNMPc Enterprise node information, event logs, and existing trend reports are immediately available and updated in real time.

SNMPC OnLine 12

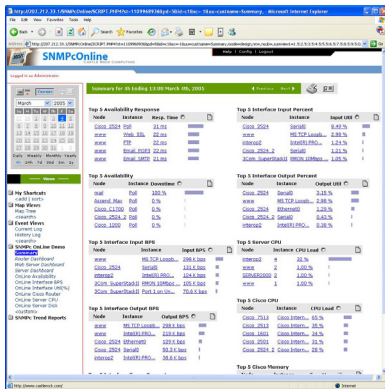
Sample Report Styles



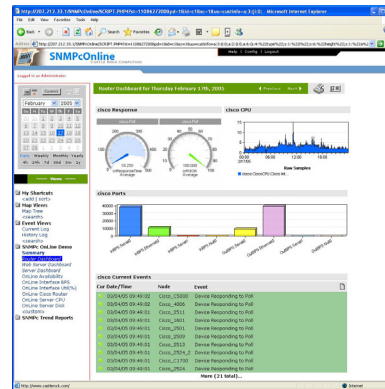
Network Overview



Detailed Device View



Top-N Report Summary



Custom Router Dashboard

System Requirements

Management Platform:	SNMPC Enterprise 8.0.7 or above
WebServer:	Apache (included) or Microsoft IIS
Database:	Microsoft SQL Server 2005 (Express Edition included)
Operating Systems:	Windows 8, 7, 2008R2
Graphics Application:	Microsoft Visio 2003 or 2010 (optional)
CPU:	Intel 2Ghz+
Memory:	4GB RAM
Disk Space:	100Gb



12930 Saratoga Ave, Saratoga, CA 95070 USA

408.366.6540

fax: 408.252.2379

sales@castlerock.com

www.castlerock.com