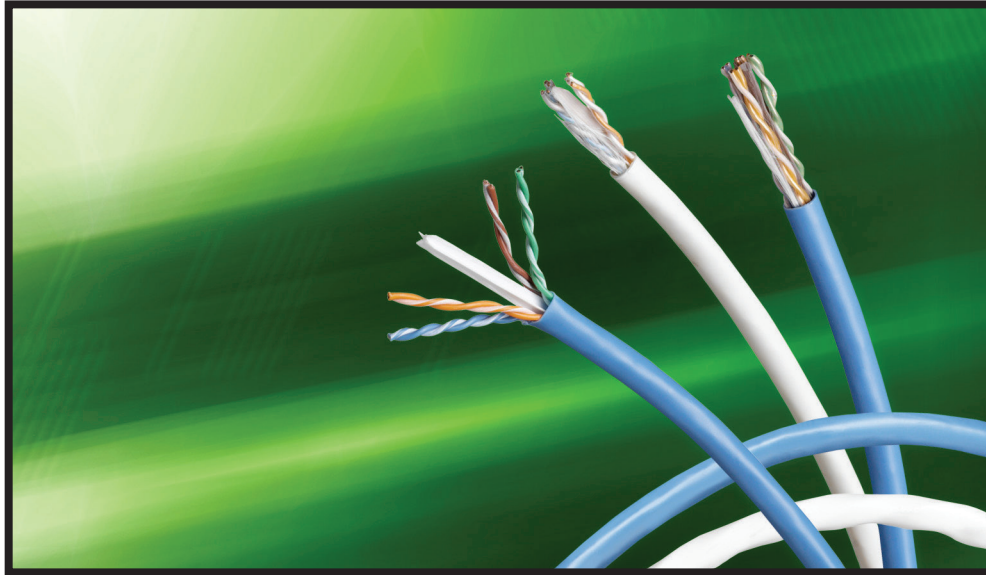


PB 295

Belden® DataTwist® 3600 Cables

DataTwist 3600 UTP Cables provide increased bandwidth and signal-to-noise margins. Their smaller diameter and high performance make possible the unique Category 6 networking solution: Belden IBDN System 3600.



DataTwist 3600 Cables Exceed TIA/EIA Requirements and Offer Significant Headroom for Category 6 Installations

DataTwist 3600 Cable

If high-performance communication systems are an element of your competitive strategy and if you consider information technology as one of the drivers of your bottom line, you should consider the speed, reliability and performance advantages provided by DataTwist 3600 Cables.

DataTwist 3600 Cables exceed all TIA/EIA Category 6 standard specifications. They provide the performance, throughput and reliability that keeps your response-time critical applications operating at their peak efficiencies. DataTwist 3600 Cables offer extremely stable transmission characteristics; and a Signal-to-Noise Ratio that is ideal for networks where noise and interference is high.

DataTwist 3600 Cables consist of 4 pairs of 23 AWG insulated copper conductors with a round flexible core construction. The patented design features a central spline to provide pair separation, and matched conductors on all four pairs, which provide superior electrical performance. Depending on your application requirements, DataTwist 3600 Cables can be specified in either our Nonbonded-Pair design or in Belden's exclusive Bonded-Pair construction.

All DataTwist 3600 Cables feature a small diameter for higher density installations – especially valuable for runs inside conduit. For the installer, the DataTwist 3600 Cables come with a unique descending sequential printing scheme that shows exactly how much cable remains on the spool or in the box. And that translates into faster installations with less waste.

Belden DataTwist 3600 Cables are part of the Belden IBDN 3600 System. The 3600 System delivers additional throughput and enhanced error-free performance needed to support high-traffic and high-bit-rate applications. The system delivers 280 MHz of usable bandwidth, while surpassing Category 6 requirements as per the TIA/EIA-568-B.2-1 standard. The 3600 System provides the speed and reliability needed for your business to perform at its profitable best.

Our End-to-End Expertise
Your End-to-End Solution

Belden DataTwist 3600 Cables Surpass Category 6 Standards

The Belden IBDN 3600 Solution delivers enhanced error-free performance for high traffic and high-bit-rate applications.

Applications

Belden DataTwist 3600 Cable is intended to be used for horizontal cable installations of high speed Local Area Networks (LANs).

Specific applications include:

- 1000BASE-T Applications (IEEE 802.3ab)
- Power Over Ethernet Plus – 2 pairs, up to 24 Watts or 4 pairs, up to 48 Watts (IEEE 802.3at)
- Power Over Ethernet – 2 pairs, up to 12.95 Watts (IEEE 802.3af)
- High Temperature up 50°C with up to 7 m length de-rating for 1000BASE-T and 100BASE-TX
- High Noise Immunity with a Noise Reduction Factor of 0.5 (TIA 569B)
- VoIP Applications with stringent Bit Error Rate (BER) / Quality of Service (QoS) objectives

Features & Benefits

- Central spline design separates pairs and maintains stable pair position, thus improving NEXT and impedance performance
- Increased bandwidth and signal-to-noise margin
- Optimized balance of transmission performance for simultaneous parallel transmission protocols
- Size minimized for compactness of installations
- Larger 23 AWG conductors are ideal for PoE and PoE+ applications
- Descending distance marking for cable length reduces waste

- Matching tip and ring color code for ease of installation
- Available in Spool-in-Box packaging for ease of installation, handling and inventory management
- Available in CMR, CMP and LSZH versions
- Available in Bonded-Pair or Nonbonded-Pair design

Technical Specifications*

Physical Characteristics

- Conductors: 23 AWG solid copper
- Insulation
 - Plenum:
 - Bonded-Pair: 100% FEP
 - Nonbonded-Pair: Dual Insulation FEP over a Polyolefin base
 - Riser and LSZH: Polyolefin
- Cable Core: Four twisted pairs cabled around Belden's patented central spline
- Jacket with Rip Cord:
 - Plenum: LSPVC
 - Riser: PVC
 - LSZH: Low Smoke Zero Halogen Polymer Alloy
 - Jacket printed at intervals indicating cable code, AWG, listings (NEC Code), verification, date, manufacturing traceability code
 - Length markings start at package length and descend

Key Physical Attributes – DataTwist 3600 Bonded-Pair Cable

4-pair, 23 AWG Bonded-Pair	Nominal O.D.	Min. Bend Radius	Weight (Cable Only)
CMR (3632)	5.97 mm (0.235 in.)	6.35 mm (0.25 in.)	40.08 kg/km (27.0 lb/kft)
CMP (3633)	5.84 mm (0.230 in.)	6.35 mm (0.25 in.)	47.50 kg/km (32.0 lb/kft)
LSZH (3644)	5.97 mm (0.235 in.)	6.35 mm (0.25 in.)	46.02 kg/km (31.0 lb/kft)

Key Physical Attributes – DataTwist 3600 Nonbonded-Pair Cable

4-pair, 23 AWG Nonbonded-Pair	Nominal O.D.	Min. Bend Radius	Weight (Cable Only)
CMR (3612)	5.97 mm (0.235 in.)	25.39 mm (1.00 in.)	41.57 kg/km (28.0 lb/kft)
CMP (3613)	5.84 mm (0.230 in.)	25.39 mm (1.00 in.)	47.50 kg/km (32.0 lb/kft)
LSZH (3624)	5.97 mm (0.235 in.)	25.39 mm (1.00 in.)	46.02 kg/km (31.0 lb/kft)

Mechanical Characteristics

- Minimum Recommended Installation Temperature: 5°C (40°F)
- Temperature Rating: 75°C (167°F)

Transmission Characteristics

- Values up to 400 MHz are guaranteed values
- Values above 400 MHz are for engineering purposes only
- DC Resistance @ 20°C, max.: 7.7 ohms/100 m
- DC Resistance Unbalance, max.:
 - Bonded-Pair: 3%
 - Nonbonded-Pair: 3%
- Mutual Capacitance, nom.:
 - Plenum: 4.9nF/100 m
 - Riser: 5.6nF/100 m
 - LSZH: 5.6nF/100 m
- Capacitance Unbalance Pair to Ground, max.:
 - Bonded-Pair: 90 pF/100 m
 - Nonbonded-Pair: 330 pF/100 m
- Input Impedance:

Input Impedance	Bonded-Pair	Nonbonded-Pair
100±12	1-20 MHz	—
100±15	20-250 MHz	1-100 MHz
100±20	250-350 MHz	—
100±22	350-550 MHz	100-200 MHz
100±32	—	200-550 MHz

- Nominal Velocity of Propagation (NVP):
 - Plenum: 72% @ 10 MHz
 - Riser: 70% @ 10 MHz
- Propagation Delay (Skew):
 - Bonded-Pair: 30ns/100 m
 - Nonbonded-Pair: 35ns/100 m

* Values are the same for Bonded-Pair and Nonbonded-Pair Cables, unless specifically noted.

Qualifications

- Category 6 requirements per TIA/EIA-568-C.2, ISO/IEC 11801 ed 2 Amendment 2 (2010) Class E
- Riser: UL Certified as CMR, and listed as NEC Type CMR per UL Standard 444, IEC 60332-3
- Plenum: UL Certified as CMP, and listed as NEC Type CMP per UL Standard 444
- LSZH: IEC 60332-1, IEC 60754, IEC 61034

Select Bonded-Pair or Nonbonded-Pair Construction

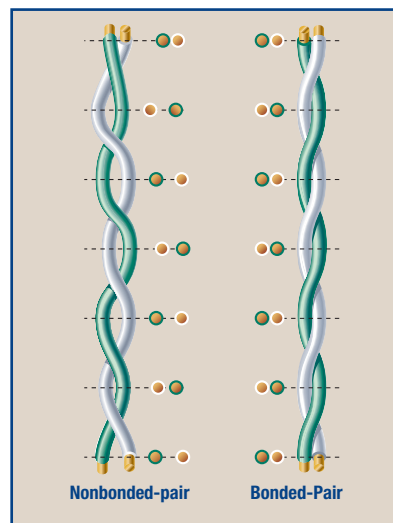
Belden provides the option of ordering DataTwist 3600 Cables in either Bonded-Pair or Nonbonded-Pair constructions. The choice will depend on the type of signals supported, the critical nature of the information transmitted, and the stability of the networking environment.

Belden's Bonded-Pair Cables feature a patented design in which the individual conductors are securely bonded along their longitudinal axis to guarantee uniform spacing within each twisted pair – a key factor in maintaining consistently high electrical performance.

Because Belden's Bonded-Pair Cables have better centricity and symmetry, they provide improved return loss and balance performance. Superior transverse conversion loss (TCL), capacitance unbalance and resistance unbalance results in the cabling infrastructure being less susceptible to electromagnetic and radio frequency interference (EMI/RFI) in noisy environments.

Belden's ultra-robust Bonded-Pair Cables can provide additional peace of mind, especially when deployed in:

- Mission-critical data centers
- Frequently changing networking environments where constant moves, adds and changes are routine
- Environments where electromagnetic and radio frequency interference (EMI/RFI) create noise and signal transmission problems

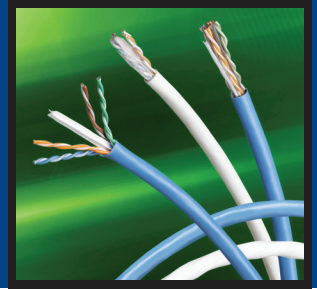


Installed and manipulated nonbonded-pairs (left) have a tendency to gap, varying the centricity of the two conductors. Belden Bonded-Pairs (right) do not gap so the physical integrity of the pair is maintained.

- High frequency applications in which return loss can affect signal integrity

In stable networking environments, Belden's standard DataTwist 3600 Cables will perform reliably to meet or exceed TIA/EIA Category 6 standards. When the application calls for a more robust solution, Belden Bonded-Pair DataTwist 3600 Cables will provide superior integrity and electrical performance from the reel to real life – through all the stresses of installation and post-installation maintenance. Belden calls this unique capability Installable Performance®.

Visit www.belden.com to learn more about Belden's Bonded-Pair construction and its unique benefits.



Technical Specifications (continued)

Key Electrical Attributes – DataTwist 3600 Bonded-Pair Cable

Frequency (MHz)	Max. Insertion Loss (dB/100 m)		Min. PSNEXT (dB)		Min. PSACR (dB)		Min. PSACRF (dB)		THE BONDED-PAIR ADVANTAGE					
									Min. Return Loss (dB)*		Min. Balance TCL (dB)*		Min. Balance ELTCTL (dB)*	
	TIA	Belden	TIA	Belden	TIA	Belden	TIA	Belden	TIA	Belden	TIA	Belden	TIA	Belden
1	2.0	2.0	72.3	79.3	70.3	77.3	64.8	70.8	20.0	20.0	40.0	42.0	35.0	37.0
4	3.8	3.7	63.3	70.3	59.5	66.6	52.8	58.8	23.0	23.0	40.0	42.0	23.0	25.0
8	5.3	5.2	58.8	65.8	53.4	60.6	46.7	52.7	24.5	24.5	40.0	42.0	16.9	18.9
10	6.0	5.8	57.3	64.3	51.3	58.5	44.8	50.8	25.0	25.0	40.0	42.0	15.0	17.0
16	7.6	7.4	54.2	61.2	46.7	53.9	40.7	46.7	25.0	25.0	38.0	40.0	10.9	12.9
20	8.5	8.3	52.8	59.8	44.3	51.5	38.8	44.8	25.0	25.0	37.0	39.0	9.0	11.0
25	9.5	9.3	51.3	58.3	41.8	49.1	36.8	42.8	24.3	25.0	36.0	38.0	7.0	9.0
31.25	10.7	10.4	49.9	56.9	39.2	46.5	34.9	40.9	23.6	25.0	35.1	37.1	-	-
62.5	15.4	15.0	45.4	52.4	30.0	37.4	28.9	34.9	21.5	25.0	32.0	34.0	-	-
100	19.8	19.3	42.3	49.3	22.5	30.0	24.8	30.8	20.1	25.0	30.0	32.0	-	-
200	29.0	28.3	37.8	44.8	8.8	16.5	18.8	24.8	18.0	21.6	27.0	29.0	-	-
250	32.8	32.1	36.3	43.3	3.5	11.2	16.8	22.8	17.3	20.5	26.0	28.0	-	-
300	-	35.6	-	42.1	-	6.5	-	21.3	-	20.1	-	-	-	-
350	-	38.9	-	41.1	-	2.3	-	19.9	-	19.8	-	-	-	-
400	-	42.0	-	38.3	-	-	-	18.8	-	19.5	-	-	-	-
450	-	45.0	-	37.5	-	-	-	17.7	-	18.9	-	-	-	-
500	-	47.9	-	36.8	-	-	-	16.8	-	18.4	-	-	-	-
550	-	50.6	-	36.2	-	-	-	16.0	-	18.0	-	-	-	-
600	-	53.3	-	35.6	-	-	-	15.2	-	17.6	-	-	-	-
650	-	55.9	-	35.1	-	-	-	14.5	-	17.2	-	-	-	-

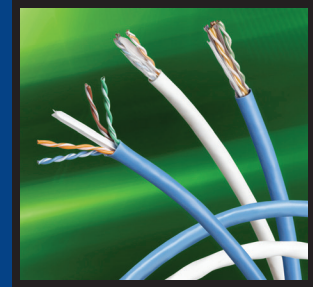
Values above 400 MHz for engineering purposes only. The values shown are guaranteed minimum performance.

* Belden's Bonded-Pair Cables provide improved return loss and balance performance.

Key Electrical Attributes – DataTwist 3600 Nonbonded-Pair Cable

Frequency (MHz)	Max. Insertion Loss (dB/100 m)		Min. PSNEXT (dB)		Min. PSACR (dB)		Min. PSACRF (dB)		Min. Return Loss (dB)		Min. Balance TCL (dB)		Min. Balance ELTCTL (dB)	
	TIA	Belden	TIA	Belden	TIA	Belden	TIA	Belden	TIA	Belden	TIA	Belden	TIA	Belden
1	2.0	2.0	72.3	79.3	70.3	77.3	64.8	70.8	20.0	20.0	40.0	40.0	35.0	35.0
4	3.8	3.7	63.3	70.3	59.5	66.6	52.8	58.8	23.0	23.0	40.0	40.0	23.0	23.0
8	5.3	5.2	58.8	65.8	53.4	60.6	46.7	52.7	24.5	24.5	40.0	40.0	16.9	16.9
10	6.0	5.8	57.3	64.3	51.3	58.5	44.8	50.8	25.0	25.0	40.0	40.0	15.0	15.0
16	7.6	7.4	54.2	61.2	46.7	53.9	40.7	46.7	25.0	25.0	38.0	38.0	10.9	10.9
20	8.5	8.3	52.8	59.8	44.3	51.5	38.8	44.8	25.0	25.0	37.0	37.0	9.0	9.0
25	9.5	9.3	51.3	58.3	41.8	49.1	36.8	42.8	24.3	24.3	36.0	36.0	7.0	7.0
31.25	10.7	10.4	49.9	56.9	39.2	46.5	34.9	40.9	23.6	23.6	35.1	35.1	-	-
62.5	15.4	15.0	45.4	52.4	30.0	37.4	28.9	34.9	21.5	21.5	32.0	32.0	-	-
100	19.8	19.3	42.3	49.3	22.5	30.0	24.8	30.8	20.1	20.8	30.0	30.0	-	-
200	29.0	28.3	37.8	44.8	8.8	16.5	18.8	24.8	18.0	18.7	27.0	27.0	-	-
250	32.8	32.1	36.3	43.3	3.5	11.2	16.8	22.8	17.3	18.0	26.0	26.0	-	-
300	-	35.6	-	42.1	-	6.5	-	21.3	-	17.5	-	-	-	-
350	-	38.9	-	41.1	-	2.3	-	19.9	-	17.0	-	-	-	-
400	-	42.0	-	38.3	-	-	-	18.8	-	16.6	-	-	-	-
450	-	45.0	-	37.5	-	-	-	17.7	-	16.2	-	-	-	-
500	-	47.9	-	36.8	-	-	-	16.8	-	15.9	-	-	-	-
550	-	50.6	-	36.2	-	-	-	16.0	-	15.6	-	-	-	-
600	-	53.3	-	35.6	-	-	-	15.2	-	15.4	-	-	-	-
650	-	55.9	-	35.1	-	-	-	14.5	-	15.1	-	-	-	-

Values above 400 MHz for engineering purposes only. The values shown are guaranteed minimum performance.



DataTwist 3600 Cable, Category 6

Bonded-Pair

DataTwist 3600 Cables are offered in Bonded-Pair and Nonbonded-Pair configurations, as well as plenum, riser and LSZH versions.

Belden Part Number	Color	Length	Packaging	No. of Packages Per Pallet	Total Length Per Pallet
DataTwist 3600, 4-pair, 23 AWG, CMR					
3632 006U1000	Blue	305 m (1000 ft)	UnReel Box	27 boxes/pallet	8235 m (27000 ft)
3632 008U1000	Gray	305 m (1000 ft)	UnReel Box	27 boxes/pallet	8235 m (27000 ft)
3632 009U1000	White	305 m (1000 ft)	UnReel Box	27 boxes/pallet	8235 m (27000 ft)
3632 003A1000	Orange	305 m (1000 ft)	Spool-in-Box	27 boxes/pallet	8235 m (27000 ft)
3632 004A1000	Yellow	305 m (1000 ft)	Spool-in-Box	27 boxes/pallet	8235 m (27000 ft)
3632 005A1000	Green	305 m (1000 ft)	Spool-in-Box	27 boxes/pallet	8235 m (27000 ft)
3632 006A1000	Blue	305 m (1000 ft)	Spool-in-Box	27 boxes/pallet	8235 m (27000 ft)
3632 008A1000	Gray	305 m (1000 ft)	Spool-in-Box	27 boxes/pallet	8235 m (27000 ft)
3632 009A1000	White	305 m (1000 ft)	Spool-in-Box	27 boxes/pallet	8235 m (27000 ft)
3632 010A1000	Black	305 m (1000 ft)	Spool-in-Box	27 boxes/pallet	8235 m (27000 ft)
3632 0041000	Yellow	305 m (1000 ft)	Spool	42 spools/pallet	12810 m (42000 ft)
3632 0051000	Green	305 m (1000 ft)	Spool	42 spools/pallet	12810 m (42000 ft)
3632 0061000	Blue	305 m (1000 ft)	Spool	42 spools/pallet	12810 m (42000 ft)
3632 0081000	Gray	305 m (1000 ft)	Spool	42 spools/pallet	12810 m (42000 ft)
3632 0091000	White	305 m (1000 ft)	Spool	42 spools/pallet	12810 m (42000 ft)
3632 0101000	Black	305 m (1000 ft)	Spool	42 spools/pallet	12810 m (42000 ft)
DataTwist 3600, 4-pair, 23 AWG, CMP					
3633 D15U1000	Blue	305 m (1000 ft)	UnReel Box	27 boxes/pallet	8235 m (27000 ft)
3633 008U1000	Gray	305 m (1000 ft)	UnReel Box	27 boxes/pallet	8235 m (27000 ft)
3633 009U1000	White	305 m (1000 ft)	UnReel Box	27 boxes/pallet	8235 m (27000 ft)
3633 002A1000	Red	305 m (1000 ft)	Spool-in-Box	27 boxes/pallet	8235 m (27000 ft)
3633 003A1000	Orange	305 m (1000 ft)	Spool-in-Box	27 boxes/pallet	8235 m (27000 ft)
3633 004A1000	Yellow	305 m (1000 ft)	Spool-in-Box	27 boxes/pallet	8235 m (27000 ft)
3633 005A1000	Green	305 m (1000 ft)	Spool-in-Box	27 boxes/pallet	8235 m (27000 ft)
3633 D15A1000	Blue	305 m (1000 ft)	Spool-in-Box	27 boxes/pallet	8235 m (27000 ft)
3633 008A1000	Gray	305 m (1000 ft)	Spool-in-Box	27 boxes/pallet	8235 m (27000 ft)
3633 009A1000	White	305 m (1000 ft)	Spool-in-Box	27 boxes/pallet	8235 m (27000 ft)
3633 010A1000	Black	305 m (1000 ft)	Spool-in-Box	27 boxes/pallet	8235 m (27000 ft)
3633 0021000	Red	305 m (1000 ft)	Spool	42 spools/pallet	12810 m (42000 ft)
3633 0031000	Orange	305 m (1000 ft)	Spool	42 spools/pallet	12810 m (42000 ft)
3633 0041000	Yellow	305 m (1000 ft)	Spool	42 spools/pallet	12810 m (42000 ft)
3633 0051000	Green	305 m (1000 ft)	Spool	42 spools/pallet	12810 m (42000 ft)
3633 D151000	Blue	305 m (1000 ft)	Spool	42 spools/pallet	12810 m (42000 ft)
3633 0081000	Gray	305 m (1000 ft)	Spool	42 spools/pallet	12810 m (42000 ft)
3633 0091000	White	305 m (1000 ft)	Spool	42 spools/pallet	12810 m (42000 ft)
3633 0101000	Black	305 m (1000 ft)	Spool	42 spools/pallet	12810 m (42000 ft)
DataTwist 3600, 4-pair, 23 AWG, LSZH					
3644 0061000	Blue	305 m (1000 ft)	Spool	42 spools/pallet	12810 m (42000 ft)
3644 0071000	Purple	305 m (1000 ft)	Spool	42 spools/pallet	12810 m (42000 ft)

To learn more about Belden IBDN copper-based structured cabling systems, call 1.800.BELDEN.1 or visit our Website at www.belden.com.

DataTwist 3600 Cable, Category 6

Nonbonded-Pair

Belden Part Number	Color	Length	Packaging	No. of Packages Per Pallet	Total Length Per Pallet
DataTwist 3600, 4-pair, 23 AWG, CMR					
3612 002U1000	Red	305 m (1000 ft)	Spool-in-Box	27 boxes/pallet	8235 m (27000 ft)
3612 003U1000	Orange	305 m (1000 ft)	UnReel Box	27 boxes/pallet	8235 m (27000 ft)
3612 004U1000	Yellow	305 m (1000 ft)	UnReel Box	27 boxes/pallet	8235 m (27000 ft)
3612 005U1000	Green	305 m (1000 ft)	UnReel Box	27 boxes/pallet	8235 m (27000 ft)
3612 006U1000	Blue	305 m (1000 ft)	UnReel Box	27 boxes/pallet	8235 m (27000 ft)
3612 007U1000	Purple	305 m (1000 ft)	UnReel Box	27 boxes/pallet	8235 m (27000 ft)
3612 008U1000	Gray	305 m (1000 ft)	UnReel Box	27 boxes/pallet	8235 m (27000 ft)
3612 009U1000	White	305 m (1000 ft)	UnReel Box	27 boxes/pallet	8235 m (27000 ft)
3612 010U1000	Black	305 m (1000 ft)	UnReel Box	27 boxes/pallet	8235 m (27000 ft)
3612 003A1000	Orange	305 m (1000 ft)	Spool-in-Box	27 boxes/pallet	8235 m (27000 ft)
3612 004A1000	Yellow	305 m (1000 ft)	Spool-in-Box	27 boxes/pallet	8235 m (27000 ft)
3612 005A1000	Green	305 m (1000 ft)	Spool-in-Box	27 boxes/pallet	8235 m (27000 ft)
3612 006A1000	Blue	305 m (1000 ft)	Spool-in-Box	27 boxes/pallet	8235 m (27000 ft)
3612 007A1000	Purple	305 m (1000 ft)	Spool-in-Box	27 boxes/pallet	8235 m (27000 ft)
3612 008A1000	Gray	305 m (1000 ft)	Spool-in-Box	27 boxes/pallet	8235 m (27000 ft)
3612 009A1000	White	305 m (1000 ft)	Spool-in-Box	27 boxes/pallet	8235 m (27000 ft)
3612 010A1000	Black	305 m (1000 ft)	Spool-in-Box	27 boxes/pallet	8235 m (27000 ft)
3612 004I1000	Yellow	305 m (1000 ft)	Spool	48 spools/pallet	14640 m (48000 ft)
3612 005I1000	Green	305 m (1000 ft)	Spool	48 spools/pallet	14640 m (48000 ft)
3612 006I1000	Blue	305 m (1000 ft)	Spool	48 spools/pallet	14640 m (48000 ft)
3612 008I1000	Gray	305 m (1000 ft)	Spool	48 spools/pallet	14640 m (48000 ft)
3612 009I1000	White	305 m (1000 ft)	Spool	48 spools/pallet	14640 m (48000 ft)
3612 010I1000	Black	305 m (1000 ft)	Spool	48 spools/pallet	14640 m (48000 ft)
DataTwist 3600, 4-pair, 23 AWG, CMP					
3613 D15U1000	Blue	305 m (1000 ft)	UnReel Box	27 boxes/pallet	8235 m (27000 ft)
3613 003U1000	Orange	305 m (1000 ft)	UnReel Box	27 boxes/pallet	8235 m (27000 ft)
3613 004U1000	Yellow	305 m (1000 ft)	UnReel Box	27 boxes/pallet	8235 m (27000 ft)
3613 005U1000	Green	305 m (1000 ft)	UnReel Box	27 boxes/pallet	8235 m (27000 ft)
3613 007U1000	Purple	305 m (1000 ft)	UnReel Box	27 boxes/pallet	8235 m (27000 ft)
3613 008U1000	Gray	305 m (1000 ft)	UnReel Box	27 boxes/pallet	8235 m (27000 ft)
3613 009U1000	White	305 m (1000 ft)	UnReel Box	27 boxes/pallet	8235 m (27000 ft)
3613 010U1000	Black	305 m (1000 ft)	UnReel Box	27 boxes/pallet	8235 m (27000 ft)
3613 002A1000	Red	305 m (1000 ft)	Spool-in-Box	27 boxes/pallet	8235 m (27000 ft)
3613 003A1000	Orange	305 m (1000 ft)	Spool-in-Box	27 boxes/pallet	8235 m (27000 ft)
3613 004A1000	Yellow	305 m (1000 ft)	Spool-in-Box	27 boxes/pallet	8235 m (27000 ft)
3613 005A1000	Green	305 m (1000 ft)	Spool-in-Box	27 boxes/pallet	8235 m (27000 ft)
3613 D15A1000	Blue	305 m (1000 ft)	Spool-in-Box	27 boxes/pallet	8235 m (27000 ft)
3613 007A1000	Purple	305 m (1000 ft)	Spool-in-Box	27 boxes/pallet	8235 m (27000 ft)
3613 008A1000	Gray	305 m (1000 ft)	Spool-in-Box	27 boxes/pallet	8235 m (27000 ft)
3613 009A1000	White	305 m (1000 ft)	Spool-in-Box	27 boxes/pallet	8235 m (27000 ft)
3613 010A1000	Black	305 m (1000 ft)	Spool-in-Box	27 boxes/pallet	8235 m (27000 ft)
3613 012A1000	Pink	305 m (1000 ft)	Spool-in-Box	27 boxes/pallet	8235 m (27000 ft)
3613 003I1000	Orange	305 m (1000 ft)	Spool	48 spools/pallet	14640 m (48000 ft)
3613 004I1000	Yellow	305 m (1000 ft)	Spool	48 spools/pallet	14640 m (48000 ft)
3613 005I1000	Green	305 m (1000 ft)	Spool	48 spools/pallet	14640 m (48000 ft)
3613 D15I1000	Blue	305 m (1000 ft)	Spool	48 spools/pallet	14640 m (48000 ft)
3613 008I1000	Gray	305 m (1000 ft)	Spool	48 spools/pallet	14640 m (48000 ft)
3613 009I1000	White	305 m (1000 ft)	Spool	48 spools/pallet	14640 m (48000 ft)
3613 010I1000	Black	305 m (1000 ft)	Spool	48 spools/pallet	14640 m (48000 ft)
3613 D152500	Blue	762 m (2500 ft)	Spool	20 spools/pallet	15250 m (50000 ft)
DataTwist 3600, 4-pair, 23 AWG, LSZH					
3624 006I1000	Blue	305 m (1000 ft)	Spool	48 spools/pallet	14640 m (48000 ft)
3624 007I1000	Purple	305 m (1000 ft)	Spool	48 spools/pallet	14640 m (48000 ft)