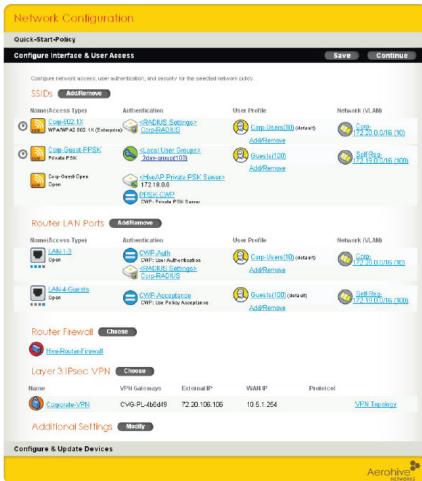
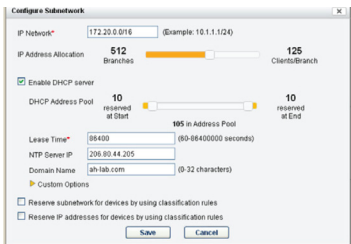


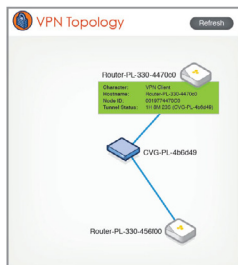
HiveManager 5.1 is an enterprise-class NMS for Aerohive APs and branch routers.



Guided configuration of unified wired and wireless Network Policies.



Convenient IP Address Management.



VPN Topology Map.

Aerohive Networks, Inc.

330 Gibraltar Drive
 Sunnyvale, California 94089 USA
 phone 408.510.6100
 toll-free 866.918.9918
 fax 408.510.6199

www.aerohive.com

HiveManager 5.1 Network Management System

Aerohive Networks HiveManager NMS is a management system for Aerohive networking products. HiveManager enables simple policy creation, firmware upgrades, configuration updates, and centralized monitoring from a single console.

Aerohive combines enterprise-class access points and branch routers with a suite of Cooperative Control protocols and functions to provide unified wired and wireless access that ensures consistent policy, permissions, and security based on identity and device type regardless of user location. HiveManager provides a centralized management instance for the entire network which enables global policy management as well as the configuration, monitoring and reporting of many APs and routers. HiveManager lowers operating costs by speeding deployment, configuration and monitoring of the wireless network.

Features & Benefits

Bringing up a network of Aerohive devices is as easy as plugging them in and browsing to the HiveManager web interface on a Windows, Linux, or Mac OSX browser. Aerohive devices connect to the HiveManager using the secure CAPWAP-DTLS protocol which traverses NAT and firewalls. It is possible to bring up a wireless LAN and L3 branch routing network in just a few minutes. HiveManager offers other key benefits, including:

- Customizable dashboard and reporting
- Streamlined Express mode, designed for Wi-Fi networking deployments
- Advanced Enterprise mode which supports larger organizations with sophisticated policy requirements
- Integrated Planner, Packet Capture, and Client Tracker tools to enable easy scoping, deployment, and remote troubleshooting
- Spectrum analysis to detect and identify non-wi-fi sources of interference at 2.4GHz or 5GHz
- Intuitive, unified management interface for wireless, routing, VPN, IP address management, and security policies
- Client-device and Operating System Reporting with top clients by usage, peak trends per SSID, and client distribution by AP

HiveManager is accessible via a web browser on Windows, Linux, or Mac OS X, providing a robust web application interface. With which to access management interface. With advanced features like zero-configuration deployment, integrated IP address management and virtual HiveManagers, HiveManager provides market-leading unified management, monitoring, and remote visibility for all your Aerohive devices.

Product	Maximum APs	Max. Virtual HiveManager	Hard Drive	Power Supply
HiveManager	500	5	Single	Single
HiveManager High-Capacity	5000	500	RAID 1 Redundancy	Redundant
HiveManager Virtual Appliance	15000*	500	n/a**	n/a**

* Scalability dependent on VMWare server and deployment configuration. ** Based on host platform's hardware configuration.

[Contact us today](#) to learn how your organization can benefit from Aerohive networking solutions.

Product Specifications

HiveManager Device Specifications

- Form factor: 1U rack-mountable device
- Chassis dimensions: 16 13/16" W x 1 3/4" H x 15 13/16" D (42.7 cm W x 4.4 cm H x 40.2 cm D)
- Weight: 13.75 lb. (6.24 kg)
- Serial port: male DB-9 RS-232 port (bits per second: 9600, data bits: 8, parity: none, stop bits: 1, flow control: none)
- USB port: standard Type A USB 2.0 port
- Two Ethernet ports: MGT and LAN – autosensing 10/100/1000Base-T

Power Specifications

- ATX (Advanced Technology Extended) autoswitching power supply with PFC (power factor corrector):
 - Input: 100 – 240 VAC
 - Output: 250 watts
- Power supply cord: standard three conductor SVT 18AWG cord with an NEMA5-15P three-prong male plug and three-pin socket

Environmental Specifications

- Operating temperature: 32 to 140°F (0 to 40°C)
- Storage temperature: -4 to 176°F (-20 to 80°C)
- Relative humidity: 10% – 90% (noncondensing)

VMware Specifications

Host Platform Minimum Hardware (1,500 APs)

- Processor: Dual Core 2GHz or better
- Memory: 2GB dedicated to the VM, at least 1GB dedicated to the host
- Disk: Min. of 10GB dedicated to VM
- VMware may impose additional requirements

Recommended Hardware (5,000 APs)

- Processor: 2x Quad Core CPUs or better
- Memory: 32GB

Tested Virtualization Platforms

- ESXi 4.0 or better
- Player on CentOS
- Player on Windows Vista
- Fusion on Mac OSX

HiveManager High-Capacity Device Specifications

- Form factor: 2U rack-mountable device
- Chassis dimensions: 16 13/16" W x 3 1/2" H x 17" D (42.7 cm W x 8.9 cm H x 43.2 cm D)
- Weight: 34 lb. (15.42 kg) without rails
- Serial port: male DB-9 RS-232 port (bits per second: 9600, data bits: 8, parity: none, stop bits: 1, flow control: none)
- Two USB ports: standard Type A USB 2.0 ports
- Two Ethernet ports: MGT and LAN – autosensing 10/100/1000Base-T

Power Specifications

- Redundant ATX (Advanced Technology Extended) autoswitching power supply with PFC (power factor corrector):
 - Input: 100 – 240 VAC
 - Output: 700 watts
- Power supply cord: standard three conductor SVT 18AWG cord with an NEMA5-15P three-prong male plug and three-pin socket

Environmental Specifications

- Operating temperature: 32 to 140°F (0 to 40°C)
- Storage temperature: -4 to 176°F (-20 to 80°C)
- Relative humidity: 10% – 90% (noncondensing)

Product Features

Simple Central Management

- Single central management instance for thousands of devices, across wireless, VPN, routing and wired networks
- User group policies can be applied network-wide or to individual APs and branch routers, and consistently across both wireless and wired network.
- Powerful policy templating feature enables updates to entire groups of APs and branch routers with a few clicks
- Simple centralized firmware upgrades with distributed download functionality to decrease WAN utilization & download time
- Staged configuration and image updates to ensure devices are updated when they reconnect to HiveManager

RF Visualization

- Network maps enable easy visualization of topology and status
- Real-time heat-maps show RF propagation within a network
- State-of-the-art Planning Tool with multi-floor auto-placement, coverage maps, and option to clone buildings and floors
- Built-in client and rogue location detection and placement on a floorplan
- Spectrum analysis to detect and identify sources of interference in the environment at either 2.4GHz or 5GHz

HiveManager Virtualization

- Provides the ability to run multiple virtual HiveManagers on a single HiveManager appliance
- Virtual HiveManagers enable complete separation of administration for large enterprises, managed services, and multi-tenant environments
- Supports up to 500 virtual HiveManagers

Zero Config Installation AP Deployment

- APs and branch routers can automatically discover their HiveManager on the same subnet or use DNS, DHCP or the Aerohive

Redirector Server to find a HiveManager anywhere in the world

- Automatically provision or quarantine new APs and branch routers

High Availability

- Disaster recovery high availability support with automated database synchronization
- Designed to work across multiple sites and/or data centers

Granular Control

- Detailed user-based policy for QoS and security features such as VPN, firewall, and schedules
- Configuration of cloud proxy to split Internet and corporate VPN traffic, with integration to Websense SaaS
- Configuration of L3 IPsec VPNs
- Automatic and flexible IP address allocation and distribution across entire remote branch network
- TeacherView Cart Application included to monitor and redirect student wireless clients during class time

Reporting and Monitoring

- Real-time monitoring of alarms and events from the APs and branch routers.
- Configuration audit capabilities ensure all configurations are up to date.
- Central collection and alerts of rogue and external APs and Clients.
- VPN dashboard with throughput, latency and availability.
- PCI 2.0 Compliance Reporting
- Network Summary report by location, device groups and SSIDs
- Client activity and OS distribution, bandwidth usage, and SLA compliance reporting

Hardware Options

- Redundant hard drive and power supply options

SKU	DESCRIPTION
HiveManager	
AH-HM-VA	HiveManager NMS Virtual Appliance with included 3 VHM licenses, 0 HiveAP licenses VMware ESX or Player
AH-HM-NR-1U	HiveManager (1U) NMS Appliance with included 3 VHM licenses, 0 HiveAP licenses, non-redundant HDD and power supply
AH-HM-R-2U	AH-HM-R-2U High Capacity HiveManager (2U) NMS Appliance with included 3 VHM licenses, 0 AP licenses, redundant HDD and power supply; HA capable
HiveManager Licenses	
AH-HM-LIC-1AP	1 HiveAP license for HiveManager
AH-HM-LIC-1VHM	1 VHM license for HiveManager
AH-HM-LIC-GM	License to enable GuestManager on the HiveManager platform
HiveManager Accessories	
AH-ACC-PWR-HCHM	Spare power supply for HighCapacity HiveManager
AH-ACC-PWR-HM	Spare power supply for HiveManager