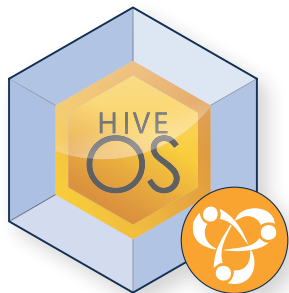


Bonjour Gateway

Enable Apple Bonjour services instantly in any enterprise



Bonjour Gateway is a software solution to drastically simplify the support of Apple devices in any enterprise

Aerohive's Bonjour Gateway is designed to vastly simplify the support of Apple-compatible devices in the enterprise. Of all the solutions available for supporting Bonjour, only Aerohive's Bonjour Gateway offers innovative multi-vendor integration, enterprise-class control features, and the simplicity of running on a standard VMware environment.

Key Features & Benefits

Enterprise-Class Bonjour Service

Aerohive's Bonjour Gateway is ideally suited for large headquarters and distributed enterprises with multiple virtual LANs (VLANs). With Aerohive's cooperative control architecture, IT departments can deploy multiple instances of Bonjour Gateway that cooperate and share information between each other to detect services running in different locations and propagate desired services across different subnets, VLANs, or router boundaries. Because it is software that operates in a standard VMware environment, it is simple to integrate the gateway into your existing network without adding any new network hardware.

Cloud-enabled Operation

The Bonjour Gateway is configured and managed from Aerohive's industry-leading HiveManager Online, our network management system delivered from our Cloud Services Platform. This allows IT departments to easily configure, control, and manage Bonjour services from anywhere in the enterprise.

Multi-vendor Integration

Aerohive Bonjour Gateway design leverages VLAN trunking to collect all information for Bonjour services on your network. This allows all services, both wired and wireless, to be collected, controlled, and managed across the entire network with simple, standards-based network integration without any new equipment other than a standard VMware server running the Bonjour Gateway software.

Service Control and Traffic Congestion Relief

Bonjour-capable devices can advertise hundreds of services and generate high levels of unwanted traffic if not filtered appropriately. While deployment and management of Bonjour services is incredibly simple with the Bonjour Gateway, the software itself is in fact a powerful service engine that allows IT administrators to not only prevent broadcast traffic from flooding their network but also greatly simplifies the task of allowing only the requisite services to be accessed across the network. When using the HiveManager system to configure the Bonjour Gateway controlling what services are available across your network is as simple as clicking a check box in the intuitive, web-based GUI.

Aerohive Networks, Inc.

330 Gibraltar Drive
Sunnyvale, California 94089 USA
phone 408.510.6100
toll-free 866.918.9918
fax 408.510.6199
www.aerohive.com

Product Specifications

Plug and Play

- Enables services without having to reconfigure VLANs or enable multicast
- Preconfigured service categories save administrators' time

Multi Vendor

- Deploy in your network without making any changes
- Vendor agnostic solution
- Virtualized form factor facilitates deployment within your IT environment

Granular Controls

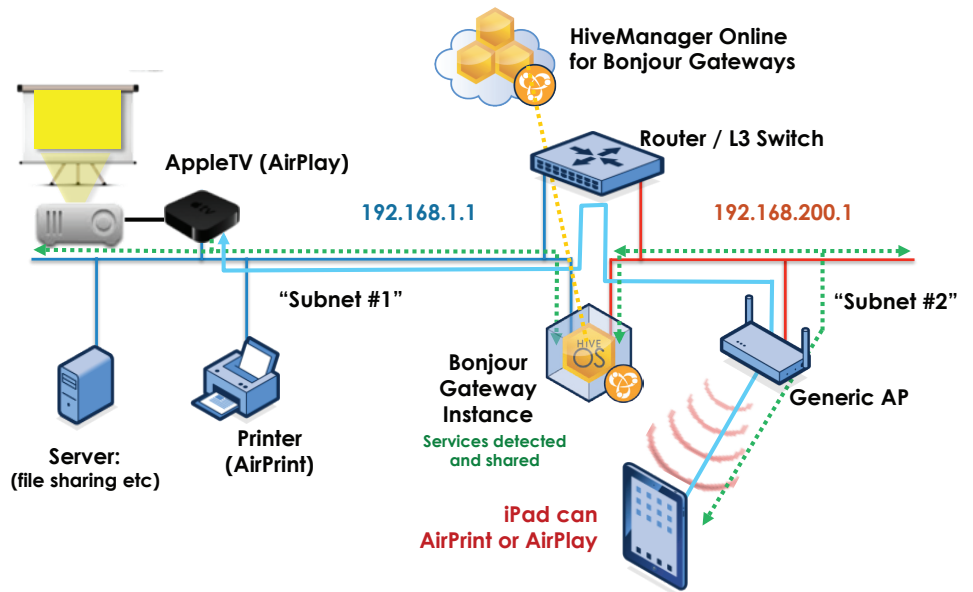
- Provides filters for controlling services allowed
- Optimized scanning on selected VLAN's

Management

- Central web-based management via HiveManager Online
- Optional CLI configuration
- Monitoring & service visibility

Privacy and Resiliency

- Cloud-based management monitoring without collection of customer's traffic
- Ensure IT privacy control policies



Bonjour Gateway Recommended Hardware Configuration

	Support for 500 Services
CPU	2.4 GHz dual-core
Memory	2+ GB (512Mb for VM)
Ethernet NICs	1 or 2
VMware version	ESXi 4.1 or later
Hard disk size	10+ GB (256Mb for VM)