



Fits into Existing Virtualized Infrastructure

- Preconfigured with VMware ESXi
- VMware certified hardware
- VMware certified SoftAX software
- VMware license included
- Manage, control and monitor with VMware vCenter natively

Reduce Cost and Simplify Operation

- Compact 1U form factor with low power consumption
- Consolidate existing and legacy ADCs
- Strong isolation per SoftAX
- Turnkey appliance enables fast deployment

Application Optimization

- Microsoft Certified for Exchange and Lync deployments
- Optimize any application, including Oracle, ADFS, DNS and more
- Improve web server response times and reduce required backend servers

Data Center Ready Today, and Tomorrow

- Accelerate with SSL Offload, RAM Caching and Compression
- Handle larger SSL key sizes up to 4096-bit
- Advanced features; aFlex traffic control and aXAPI management
- IPv6 web server connectivity (Dual-stack or SLB-PT/SLB-64)
- Global Server Load Balancing (GSLB) per instance included
- No licensing fees for premium features, ADC instances and performance

Built for Uptime and Peace of Mind

- More power, Intel Hex-core Xeon CPU
- 10 Gb port connectivity
- Redundant power supply included
- SSDs included, no HDD (no spinning media)
- Reliable server grade ECC memory
- High availability
- Application health checks

- **Simplified Consolidation:** Reduce costs by consolidating legacy ADCs
- **Strong Isolation:** Run multiple 100% independent ADCs in one appliance
- **VMware Certified:** Both hardware and software certified for peace of mind

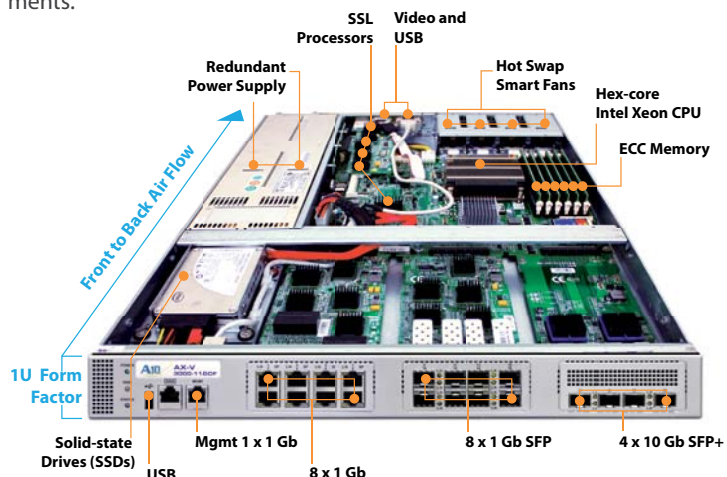
Virtualization deployments utilizing hypervisor technology are pervasive within modern data centers. Virtualization is traditionally used to reduce costs and power cloud architectures at the server tier. Now the same cost saving virtualization capabilities are available for network Application Delivery Controllers (ADCs) with A10 Networks' AX-V appliances. The AX-V family of products offers multiple independent ADCs in a fraction of the space of traditional dedicated devices, offering significant CAPEX and OPEX savings for new or existing ADC and server load balancing projects.

A10 Networks has partnered with the industry-leading virtualization pioneer VMware to embed its ESXi hypervisor within a custom-built VMware certified AX Series hardware appliance, providing a turnkey enterprise solution for simple and fast deployment.

The AX-V 3000-11-GCF includes 12 pre-installed SoftAX virtual appliances. No licenses are required; all features, performance and the virtualized SoftAX virtual appliances themselves are ready to go immediately. Performance of 10+ Gbps throughput is achieved while consuming a maximum of 350 Watts. The AX-V 3000-11-GCF can replace over ten 1 Gbps rated entry level or legacy ADCs, while also reducing rack space by 10x and power by 5x.

The AX-V 3000-11-GCF offers outstanding value and advanced features as a SoftAX virtual appliance delivery platform. For example, dedicated SSL processors remove the traditional virtual appliance weak spot, which is experienced on commodity hardware.

The VMready AX-V 3000-11-GCF's reliability, performance and unique no-licensing model for ADCs dramatically simplifies the complexity of virtual appliance deployments.



AX-V Features

Application Delivery Features

- Comprehensive IPv4/IPv6 Support
- Advanced Layer 4/Layer 7 Server Load Balancing
 - ◆ Fast HTTP, Full HTTP Proxy
 - ◆ High-performance, template-based Layer 7 switching with header/URL/domain manipulation
 - ◆ Comprehensive Layer 7 application persistence support
 - ◆ Comprehensive load balancing methods: Round Robin, Least Connections, Fastest Response
- Firewall Load Balancing ALG support for FTP and SIP
- SSL Intercept Load Balancing/SSL Forward Proxy Support
- aFlEx – deep packet inspection and transformation for customizable, application-aware switching
- Advanced Health Monitoring
 - ◆ Comprehensive Protocol Support - ICMP, TCP, UDP, HTTP, HTTPS, FTP, RTSP, SMTP, SNMP, DNS, RADIUS, LDAP
 - ◆ TCL Scriptable Health Check Support
 - ◆ High Availability – Active-Active, Active-Standby configurations with sub-second failover
 - ◆ STARTTLS support for Secure Email (POPS, SMTPS, IMAPS) & LDAPS
- Hash-based Persistence
- Spam Filter Support – high-speed application of very large black/white lists
- Firewall Load Balancing (FWLB)
- Global Server Load Balancing (GSLB)

- Transparent Cache Switching (TCS)
- Link Load Balancing (LLB)
- Diameter AAA Load Balancing

Acceleration & Security Features

- HTTP Acceleration & Optimization
 - ◆ HTTP Connection Multiplexing
 - ◆ HTTP Caching
 - ◆ HTTP Compression
- SSL Acceleration
 - ◆ Hardware-based SSL Offload
 - ◆ Support for all TCP Protocols – SSL Termination, SSL Bridging (SSL Initiation)
- SSL Session-ID Reuse
- Support for TLS 1.2
- SYN Cookies, IP Anomaly Detection
- Connection Rate Limiting/Connection Limiting
- DNS Application Firewall
- SSL Intercept

High Performance, Scalable Platform

- ACOS Operating System
 - ◆ Linux on Control Plane
 - ◆ ACOS on Data Plane

Networking

- Integrated Layer 2/Layer 3
- Routing – Static Routes, IS-IS (v4/v6), RIPv2(IPv4)/ng(IPv6), OSPF v2/v3, BGP4+
- VLAN (802.1Q)
- Access Control Lists (ACLs)
- Traditional IPv4->IPv4 NAT/NAPT
- IPv6->IPv6 NAPT
- Jumbo frame support

IPv6 Migration

- Full native IPv6 management and feature support
- SLB-PT (Protocol Translation), SLB-64 (IPv4->IPv6, IPv6->IPv4)
- Application Level Gateways (ALGs) for FTP, TFTP, RTSP, PPTP, SIP, ICMP, DNS, ESP

Management

- Dedicated management interface (VM console access, SSH, Telnet, HTTPS, SFTP)
- Web-based Graphical User Interface (GUI) with Language Localization
- Industry-standard Command Line Interface (CLI)
- SNMP, Syslog, Email Notification
- Port Mirroring
- REST-style XML API (aXAPI)
- LDAP, TACACS+, RADIUS Support

Virtualization

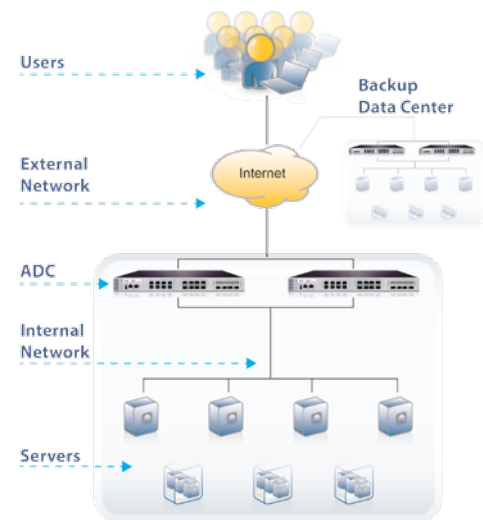
- aVCS (AX Virtual Chassis System)
- SoftAX Virtual Appliance support for VMware vSphere
- Hypervisor acceleration and management integration

Carrier-grade Hardware

- Advanced hardware architecture
- Hot-swap redundant power supply
- Hot-swap smart fans
- Solid-state drive (SSD)
- Error Correcting Code (ECC) memory
- SSL Acceleration Hardware

AX-V 3000-11-GCF Appliance Summary

| | AX-V 3000-11-GCF |
|--|---|
| Strongly Isolated SoftAX Virtual Appliances | 12 (pre-installed, no licenses required) |
| Hypervisor | VMware ESXi |
| Processor | Hex-core |
| Hardware Acceleration | SSL processors (5 dedicated) |
| Memory | 24 GB |
| Ethernet Interfaces | 4 x 10 Gb Fiber (SFP+), 8 x 1 Gb fiber (SFP), 8 x 1 Gb Copper |
| Other Ports | 2 x USB and 1 x Video |
| Power Supply | Dual 400 W RPS included, 100 – 240 VAC, Frequency 50 – 60 Hz |
| Max Power Consumption | 350 W |
| Operating Temperature Range | 0° – 40° C |
| Dimensions | 1.75 in (H) x 17 in (W) x 21.8 in (D) |
| Unit Weight | 26 lbs |
| Regulatory Certification | FCC Class A, UL, CE, TUV, CB, VCCI |
| Standard Warranty | 90-day Hardware & Software |



Application Delivery Landscape

Note: Two AX-V 3000-11-GCF units are recommended for High Availability to guard against hardware failure.